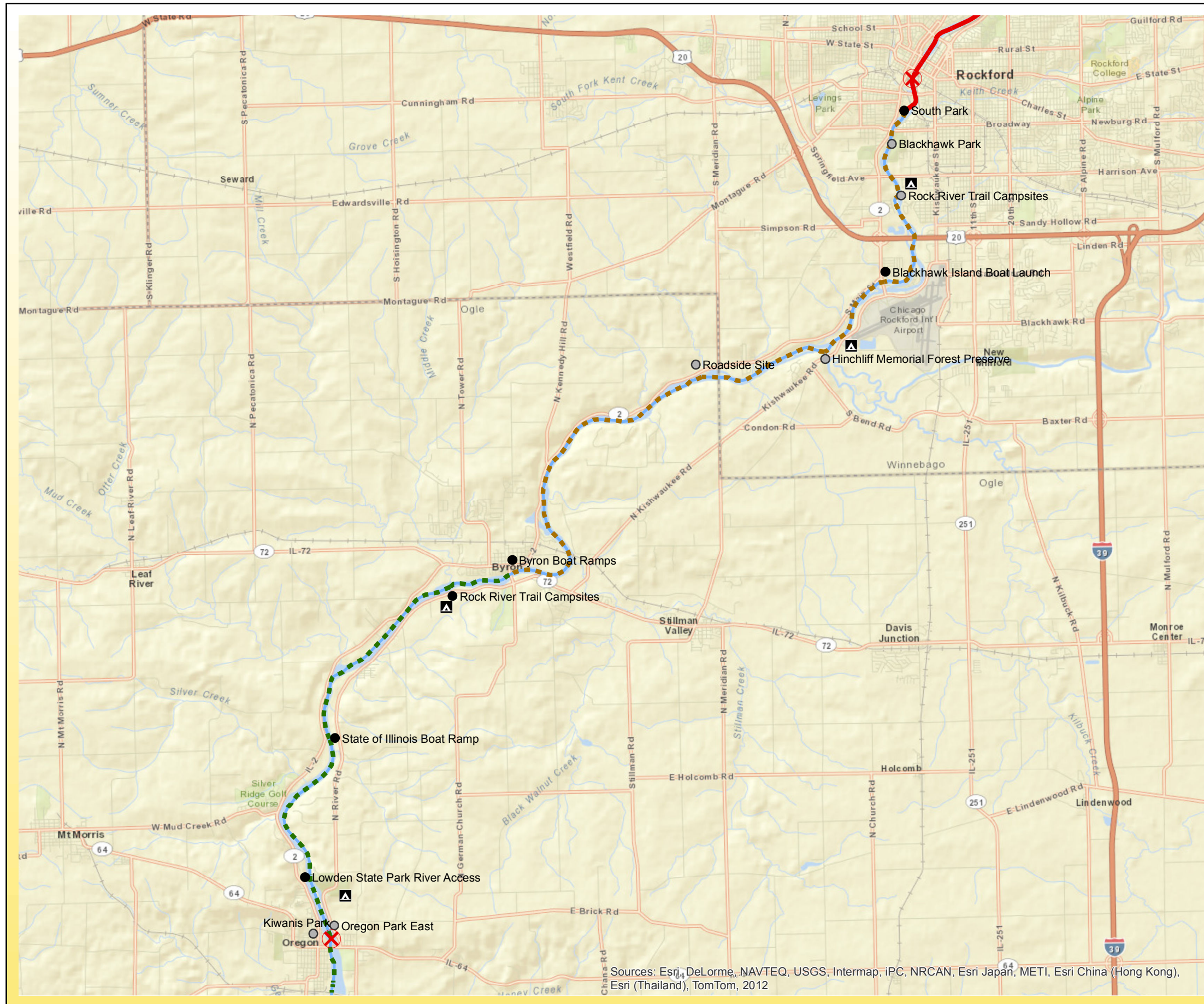


Rock River Water Trail



Rockford to Oregon Section H



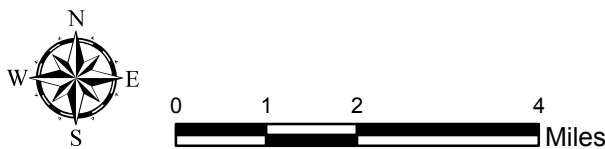
Water Trail Segment

- Challenge, Urban
- Challenge, Rural
- Gateway, Urban
- Gateway, Rural
- Gateway, Wilderness
- Recreational, Urban
- Recreational, Rural
- Recreational, Wilderness

- Dam
- Campsite
- Access Sites
 - Alternate
 - Carry-In
 - Developed

Site Locations & River Mile Marker

- South Park, 135.8
- Blackhawk Park, 135.3
- Rock River Trail Campsites, 134.2
- Blackhawk Island Boat Launch, 131.9
- Hinchliff Memorial Forest Perserve, 129.7
- Roadside Site, 127.4
- Byron Boat Ramps, 120.7
- Rock River Trail Campsites, 120.2
- State of Illinois Boat Ramp, 111.7
- Lowden State Park River Access, 110.7
- Oregon Park/ Kiwanis Park, 109.6



This map was compiled by WinGIS on 8/28/12. WinGIS makes no warranties, either expressed or implied as to any matter whatsoever, including, without limitation, the condition of the product, or its fitness for any particular purpose. The burden for determining fitness for use lies entirely with the user.

Sources: Esri, DeLorme, NAVTEQ, USGS, Intermap, IPC, NRCAN, Esri Japan, METI, Esri China (Hong Kong), Esri (Thailand), TomTom, 2012