

Rock River Water Trail



Jefferson to Fort Atkinson to Indianford Section E

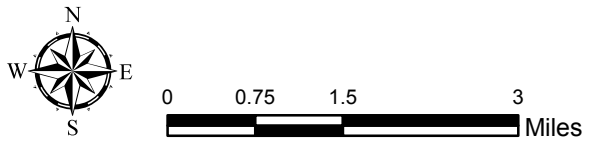
Water Trail Segment

- Challenge, Urban
- Challenge, Rural
- Gateway, Urban
- Gateway, Rural
- Gateway, Wilderness
- Recreational, Urban
- Recreational, Rural
- Recreational, Wilderness

- Dam
- Campsite
- Access Sites
 - Alternate
 - Carry-In
 - Developed

Site Locations & River Mile Marker

- Riverfront Park, 218.4
- East Riverview Drive Boat Lanuch, 217.9
- River Island near CTH K, 215.6
- Elmore Klement Park, 213.9
- Bark River Fry Hatchery, 211.9
- North Water Street West, 211.1
- Old Hwy 106 Bridge, 209.9
- Groeler Road, 207.5
- Vinnie Ha Ha Road, 205.3
- North Shore Road, 206.0
- Kuehn Road Boat Launch, 204.4
- Carcajou Point, 203.6
- Bingham Road, 202.2
- Royce Dallman County Park, 201.0
- Newville Public Access, 196.6
- Bubba D's, 193.0



This map was compiled by WinGIS on 8/28/12. WinGIS makes no warranties, either expressed or implied as to any matter whatsoever, including, without limitation, the condition of the product, or its fitness for any particular purpose. The burden for determining fitness for use lies entirely with the user.

Sources: Esri, DeLorme, NAVTEQ, USGS, Intermap, IPC, NRCAN, Esri Japan, METI, Esri China (Hong Kong), Esri (Thailand), TomTom, 2012