

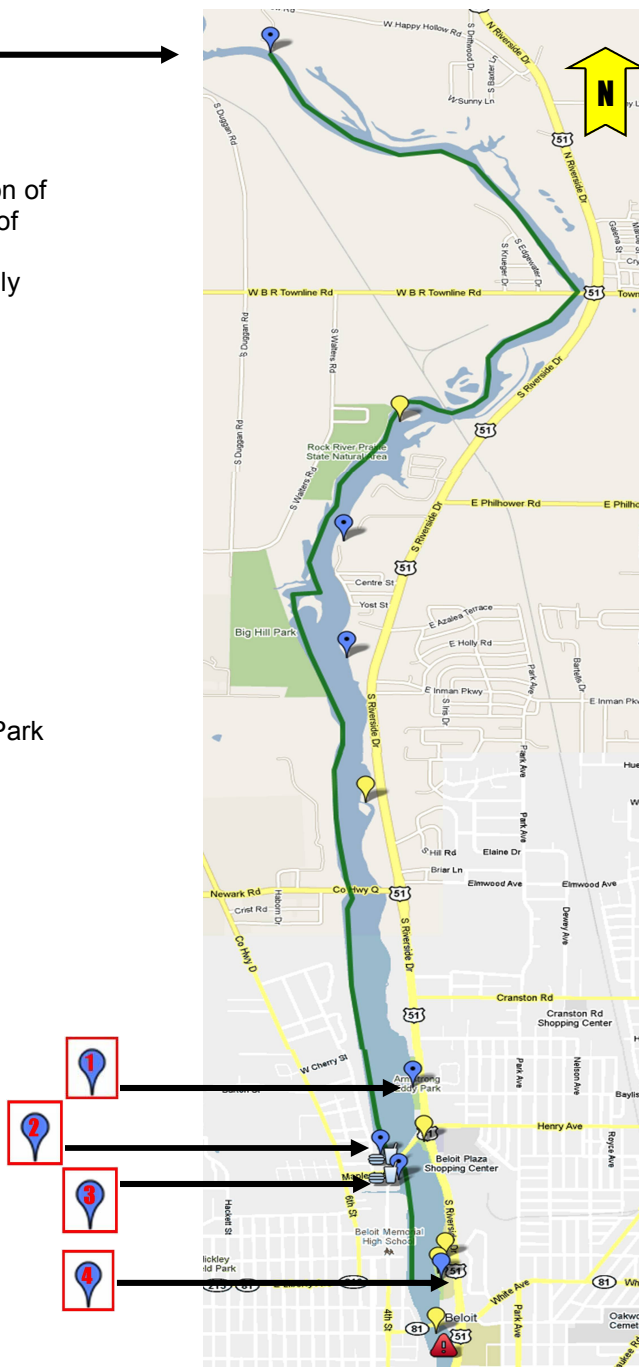
Happy Hollow Park to Beloit Paddle

Happy Hollow County Park
1731 W. Happy Hollow Rd.
Janesville, WI
Take Hwy. 51 N to Happy Hollow Rd.

This 8 mile paddle takes you from the quiet portion of the Rock River north of Beloit right into the heart of Beloit. In addition to the wooded shoreline in the northern portion, enjoy viewing scenic bluffs, lovely homes and other interesting things to see and do along the way.

Interesting Stops & Sights along the way:

- Sand Bar (favorite pit stop for boaters)
- Rock River Prairie State Natural Area
- Preservation Park
- Big Hill Park
- The Rock Bar & Grill
- "Celebration" Sculpture in Riverside Park
- Beloit Memorial High School
- Turtle Island Playground
- Riverside Park Lagoon & Fountains
- "Lincoln Camped Here" Marker at Riverside Park Take Out Point.
- Wood Family Fishing Bridge



There's More Rock River to Explore! Discover The New Rock River Trail - Established 2010
Enjoy 287 Miles of Rock River from Horicon, WI to Rock Island, IL www.rockrivertrail.com



Happy Hollow to Beloit Paddle



This Rock River paddle takes you from the quiet part of the river north of Beloit, right into the heart of Beloit. Choose from several takeout points.

**Put in at the
Happy Hollow County Park
and take out at:**



Armstrong Eddy Park: 1.75-2 hours - 7.5 miles
Parking, boat launch



The Rock Bar & Grill: 2 hours - 7.5 miles
Parking, casual dining, patio dining, restrooms



Wooton Park: 2 hours - 7.75 miles
Burger King across street, parking, boat launch, porta-potti



Riverside Park - Lagoon Bridge: 8 miles
Bathrooms, porta-potti, picnic, parking, concessions.



Dam - no easy portage, don't go past Train Bridge.

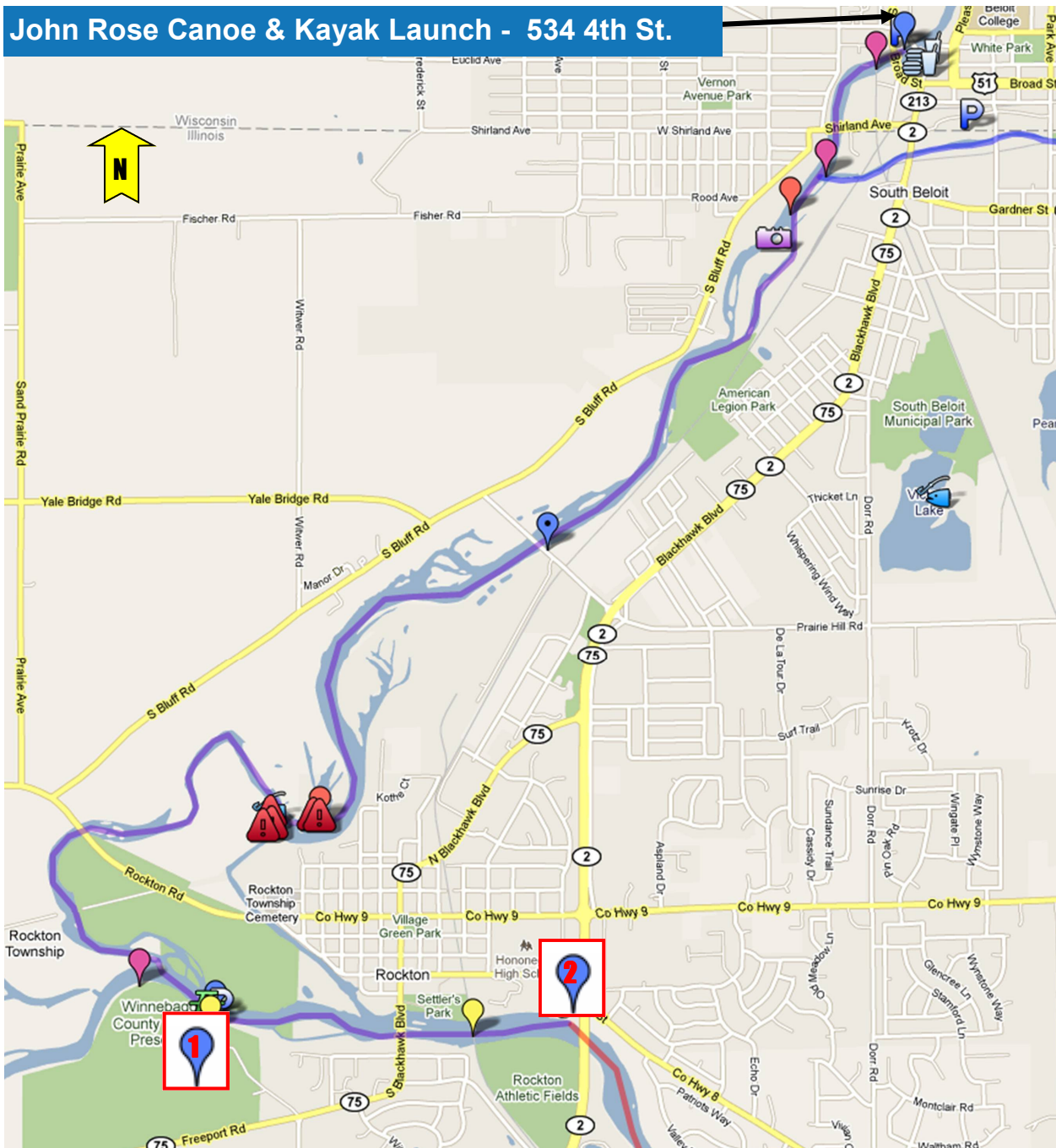
For longer paddle trip see Beloit to Roscoe map
Find an [interactive Google Map](http://www.visitbeloit.com) with more details
on Visit Beloit's website.



Beloit's Waterway Trails - Rock River and Turtle Creek
Learn more at www.visitbeloit.com 608-365-4838

Beloit to Rockton Paddle

John Rose Canoe & Kayak Launch - 534 4th St.






Beloit to Rockton Paddle



The Beloit to Rockton paddle is a scenic, quiet stretch of river. Choose from several easy takeout points.

Put in at the
John Rose Canoe & Kayak Launch in Beloit and take out at:

-  **Macktown Forest Preserve:** 2 hours
Historic site, picnic area, hiking, parking
-  **Rockton Boat Launch:** 2.25 hours - 7.5 miles
Parking
-  **Dam Portage** - An easy-to-do, well marked, short portage around a low head dam before reaching both takeout points.

For longer paddle trip see Beloit-Roscoe map.

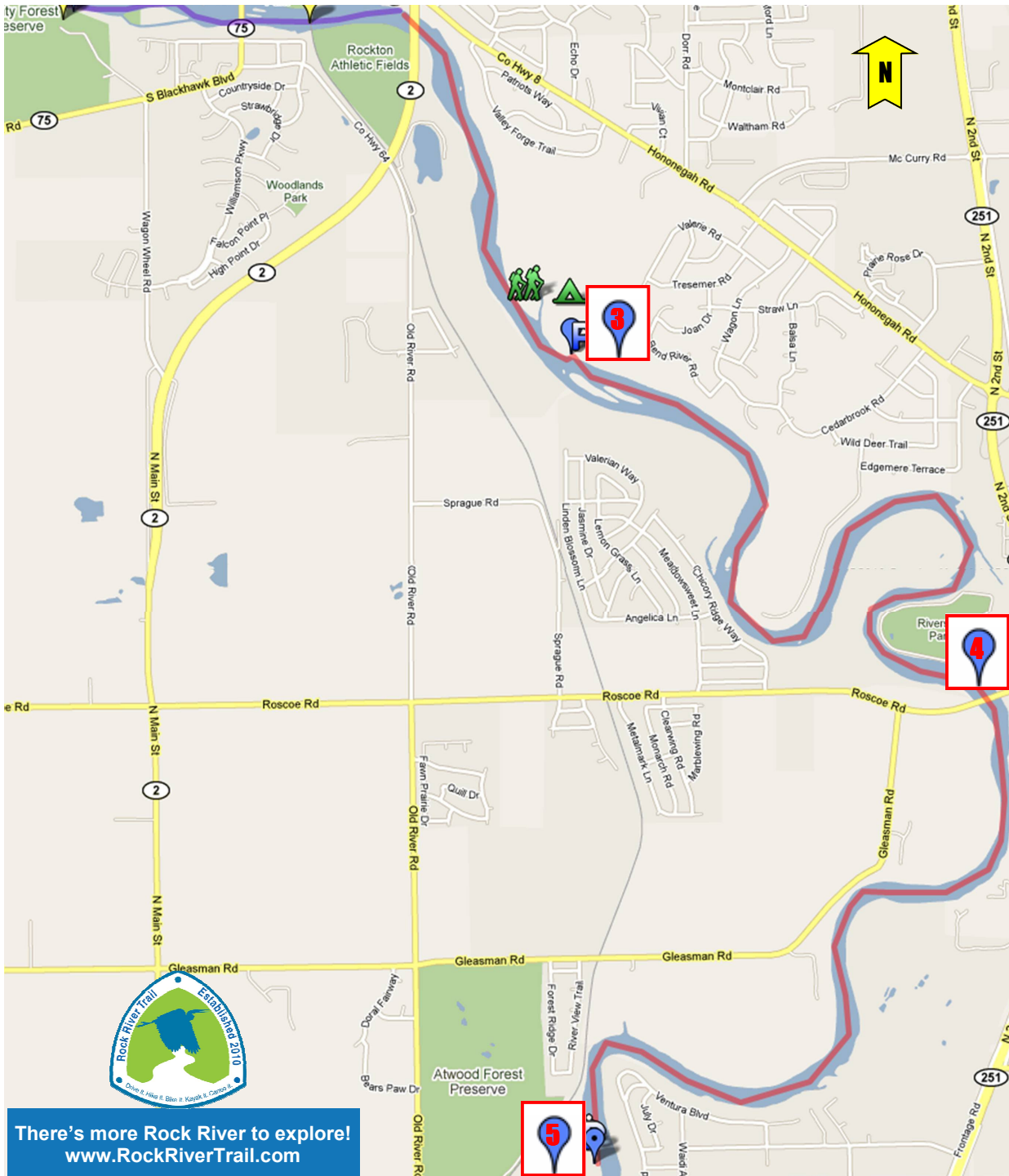
Find an [interactive Google Map](#) with more details on Visit Beloit's website.



Discover The New Rock River Trail - Established 2010
Enjoy 287 Miles of Rock River from Horicon, WI to Rock Island, IL www.rockrivertrail.com

Beloit's Waterway Trails - Rock River and Turtle Creek
Learn more at www.visitbeloit.com 608-365-4838

Beloit to Roscoe Paddle






Beloit to Roscoe Paddle



The Beloit to Roscoe paddle is a scenic, quiet stretch of river with several easy takeout points with great parking.

Put in at the
John Rose Canoe & Kayak Launch in Beloit and take out at:

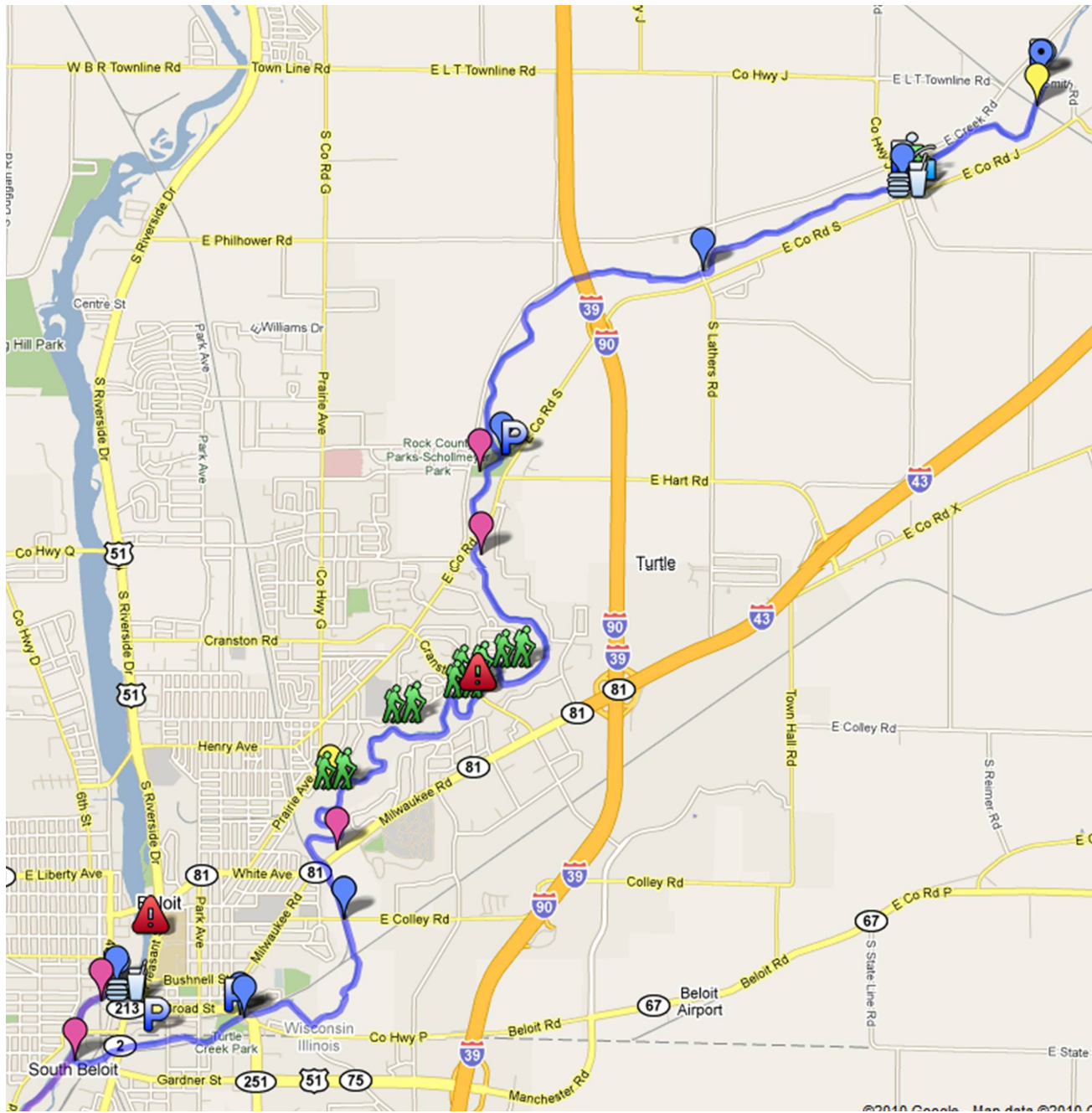
-  **Hononegah Forest Preserve: 3 hours**
Hiking, outhouse, picnic area, camping, parking at Youth Camping area.
-  **Riverside Park Boat Launch: 3.5 hours**
-  **Atwood Forest Preserve: 4.5 hours - 16 miles**
Hiking, outhouse, picnic area, parking

For shorter paddle trips see Beloit-Rockton map.

Find an [interactive Google Map](#) with more details on Visit Beloit's website.



Beloit's Waterway Trails - Rock River and Turtle Creek
Learn more at www.visitbeloit.com 608-365-4838



Turtle Creek Trails

**Canoe it. Kayak it.
Tube it. Hike it.**



More than 13 scenic miles of winding Turtle Creek await you in the Beloit area. Or take a walk on the wild side of Beloit and enjoy a hike on the Turtle Creek Greenway Trails.

For complete details on put in and take out points visit the [interactive Google Map](#) with more details on Visit Beloit's website.



Discover The New Rock River Trail - Established 2010
Enjoy 287 Miles of Rock River from Horicon, WI to Rock Island, IL www.rockrivertrail.com

Beloit's Waterway Trails - Rock River and Turtle Creek
Learn more at www.visitbeloit.com 608-365-4838Interactive